

# CA ARCserve Backup

Go beyond backup, so your business can go beyond today.

IN BUSINESS, CHANGE IS CONSTANT. STAFF GROWS. NEW OFFICES SPRING UP. AND TYPICALLY, YOU'RE THE ONE ON THE HOOK TO MAKE SURE YOUR DATA IS ALWAYS PROTECTED.

CA ARCSERVE BACKUP GOES BEYOND BACKUP, GIVING SMALL AND MEDIUM-SIZED BUSINESSES HIGHLY RELIABLE DATA PROTECTION WITH CENTRALIZED MANAGEMENT THAT MAKES SENSE, NO MATTER HOW COMPLEX YOUR DATA OR IT INFRASTRUCTURE IS – AT A FRACTION OF THE COST OF THE COMPETITION.

REDUCE YOUR BACKUP STORAGE BY UP TO 80 PERCENT AND GAIN BACK PRECIOUS TIME WITH THE ONLY PRODUCT THAT COMBINES DATA DEDUPLICATION, GRANULAR RESTORE OF APPLICATIONS LIKE ACTIVE DIRECTORY, EXCHANGE AND SHARE-POINT, AND INFRASTRUCTURE VISUALIZATION – FOR BOTH PHYSICAL AND VIRTUAL SERVERS IN A SINGLE PACKAGE.<sup>1</sup>

YOUR DATA IS ALWAYS SECURE WHICH MEANS YOU CAN SPEND YOUR TIME ON MORE PRESSING ISSUES.

## OVERVIEW

As organizations are challenged with managing increasingly vast volumes of information from new applications, versions and growing numbers of virtualized servers, there is a new emphasis on improving data management efficiency. With CA ARCserve Backup, organizations have access to easy-to-use tools that reduce management time, and innovative technology that makes data protection simple.

## BENEFITS

With extensive management features that work together to help reduce the time you spend managing your backups, CA ARCserve Backup provides “enterprise class” functionality no matter how simple or complex your data or your IT infrastructure is. CA ARCserve Backup helps you quickly prepare for, respond to and recover from the disasters and disruptions that would otherwise threaten the integrity and reliability of your core business operations.

## THE CA ARCSERVE ADVANTAGE

CA ARCserve Backup offers superior functionality for businesses of every size and type that need to protect the data they rely on each day. In this way, CA ARCserve Backup helps ensure that the data your organization creates is protected and recoverable following a disaster or disruption. Moreover, CA ARCserve Backup is a core component of the larger CA ARCserve Family – providing you with the full continuum of data protection and available technologies to help meet all your data needs.

## You'll be surprised at how much we can do for you.

We make managing your environment easy with a dashboard feature that shows you the status of your real and virtual servers, storage and connectivity at a glance.

CA ARCserve Backup supports Windows, UNIX, Linux and NetWare environments, and its modular architecture lets you start small and grow as you need to, adding modules to provide additional levels of protection without having to learn a new product or buy another solution.

[1] AS OF FEBRUARY 2010.

## We deliver a host of core capabilities, including:

**INTERGRATED DATA DEDUPLICATION** Improves the economics of backup and recovery by enabling longer retention periods, providing a cost-effective means of reducing storage, protecting critical data and integrating, configuring and managing data deduplication in the existing backup environment.

**VIRTUALIZE SERVERS WITH CONFIDENCE** Incorporate sophisticated backup and recovery functionality into VMware, Microsoft Hyper-V, and Citrix XenServer virtualization technologies – easing management and mitigating the risk of data on virtualized servers.

**DASHBOARD WITH SRM REPORTING** Offers graphical insight into your backup environment to monitor the status of all backup activities, find the nodes that are taking the longest, locate backed up data, discover if data is encrypted and ready for disaster recovery and track volume, disk and memory usage on each of your production servers.

**CENTRALIZED MANAGEMENT AND ADMINISTRATION** Utilizes a three-tier architecture that allows administrators to manage, modify and control backup and restore jobs, media devices, activity logs, alerts, catalogs, product licensing and reports from a single point that spans local and remote servers and locations.

**ADVANCED BACKUP AND RESTORE SUPPORT** Employs specific agents to support your core applications – including Microsoft SQL Server, Microsoft Exchange Server, Microsoft SharePoint, Oracle, Lotus Domino, SAP R/3 and Sybase – and helps you ensure data integrity by protecting the transaction log, archive log and journal files and all associated data.

**FLEXIBLE BACKUP METHODS** Include backup to disk, backup to tape, D2D2T backup, VTL and Microsoft Volume Shadow Copy Service snapshot support, hardware snapshot support, multiplexing and multi-streaming – which work in concert to provide you with high-performance, non-disruptive backup and restore operations that help meet the specific needs of your mission-critical information and data assets.

**EFFICIENT BACKUP PROCESSES** Feature patent-pending data deduplication and SRM reporting functionality that help eliminate redundant data and reduce storage costs, enabling you to store more recovery points on a given disk and provide actionable information that helps you improve the performance and reliability of your backup, storage and server environment.

**CA ARCSERVE REPLICATION AND HIGH AVAILABILITY INTEGRATION** Enables you to browse and back up replicated data, restore data to the production or replica server, create synthetic full backups, view CA ARCserve Replication and HA reports and launch the CA ARCserve Replication and HA graphical user interface (GUI) from within the CA ARCserve Backup GUI.

**WAN BANDWIDTH-OPTIMIZED REMOTE OFFICE BACKUPS** Enables you to replicate remote office data to your central data center and perform non-disruptive replica server backups designed to eliminate the need to implement a tape-based backup solution at your recovery sites – helping you better utilize your existing backup resources and save time and money.

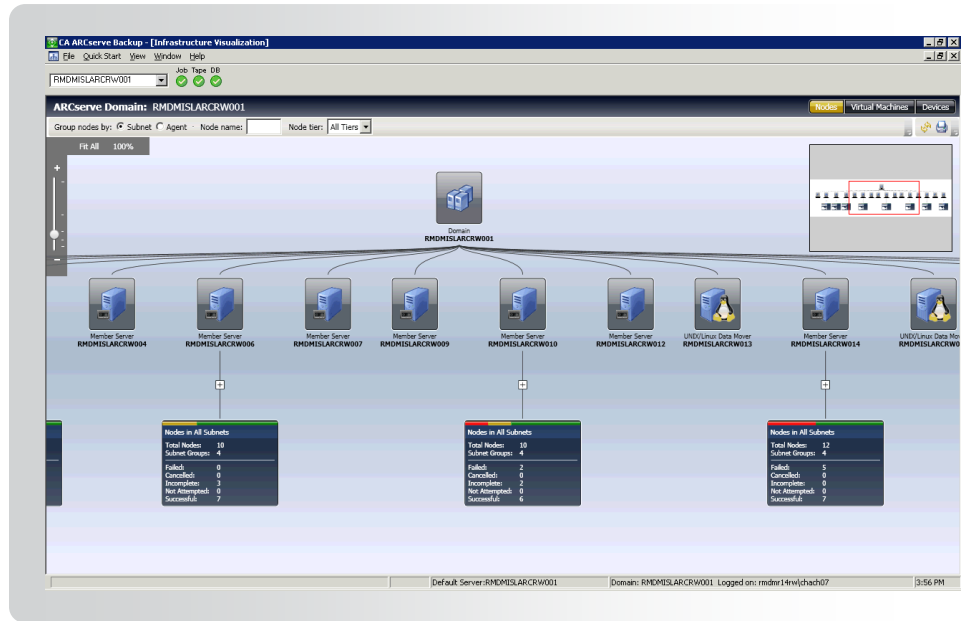
**SMART RESTORE CAPABILITY** Redirects restore jobs to other media containing the same data without any manual intervention, reducing the chances that errors will negatively affect recovery processes.

**FLEXIBLE DEPLOYMENT** Available as individual components, suites based on server type and suites based on capacity to meet your specific needs and purchasing requirements, making it incredibly easy to buy.



More than Backup

**THE CA ARCSERVE BACKUP DASHBOARD INCLUDES INFRASTRUCTURE VISUALIZATION THAT PROVIDES A DETAILED GRAPHICAL VIEW OF THE BACKUP ENVIRONMENT, SHOWING NODES AND OTHER ENTITIES WITH STATUS AS WELL AS POP-UPS TO RETRIEVE EVEN MORE INFORMATION.**



## New Features and Functionality in CA ARCserve Backup r15

CA ARCserve Backup r15 is designed to extend the capabilities of the product with a host of robust new features and functionality, including:

**GRANULAR RESTORE OF ACTIVE DIRECTORY** Restore individual Active Directory objects from a System State backup without having to reboot the AD Domain Controller. Single System state backup allows for both object level and system level restore saving time.

**INFRASTRUCTURE VISUALIZATION** Provides an easy-to-read network diagram view of the entire environment including all of the servers, storage and other devices showing how they relate to each other and to the CA ARCserve Backup media server(s). Easy drill down on each component offers status, backup methodology and other key information.

**UNIX/LINUX DATA MOVERS FOR SAN-BASED BACKUPS** Provide faster, more efficient backups and restores for databases and file systems on Unix & Linux servers while also providing centralized management, reporting and licensing for all servers via the CA ARCserve Backup Media Server.

**GRANULAR RESTORES OF SHAREPOINT** Enables you to restore individual files, sites, and sub-sites within a SharePoint environment for fast recovery. The entire environment can also be restored if required and all types of restoration can be achieved using a single-pass full-farm backup.

**GLOBAL DASHBOARD** Helps reduce management complexity with worldwide operational monitoring and SRM reporting across all offices from a single location to improve reliability, help ensure compliance to corporate policies and proactively respond to help avoid unplanned downtime. Easy-to-read graphical reports detail environmental status from backups to storage to servers to networks across all offices to help save time and resources.

**ENHANCED SRM REPORTING** New reports help ease management of the environment and enable proactive problem avoidance. For example, file system disk usage trending helps you manage and plan future disk space requirements. Performance Key Indicators allow thresholds to be set for critical resources such as CPU, memory and disk space, and alerts when the threshold has been reached. There is even a report that shows which systems are using the ARCserve licenses to help manage them more efficiently and reduce costs.

**AGENT SUPPORT FOR EXCHANGE 2010** Provides support for the new Database Availability Group (DAG) in Exchange 2010 to enable backups of Exchange from passive nodes, thus minimizing any performance effects that might have occurred on the production server during the backup process.



**AGENT SHAREPOINT 2010** Enables easy backup and restore of SharePoint 2010 farm components or individual items to their original or alternate locations.

**AGENT FOR LOTUS 8.5 DAOS** Provides support for the new Domino Attachment and Object Service (DAOS) for backup of all DAOS supporting files to enable a thorough recovery of the data. Also supports non-DAOS-enabled Lotus environments to efficiently back up and restore Lotus 8.5 data.

**CENTRALIZED OPEN FILE AGENT LICENSING** Helps reduce administrative overhead by enabling a single CA ARCserve Backup media server to manage all open-file agent licenses in your environment.

## Doing our small part to make your life easier.

CA ARCserve Backup integrates easily with other management tools offered by both CA and third-party vendors so you can benefit from the full support of CA, a long-time market leader in IT-enabled business solutions.

## Part of the ARCserve Family of Products

As a key component of the CA ARCserve Family of products, CA ARCserve Backup delivers the functionality that helps you maximize the performance, efficiency and effectiveness of your backup and recovery strategy.

By integrating the control of your operations, you'll better manage risk, costs and service – and ensure that recovery and availability measures align with business goals.

## Take the next step.

To learn more – and for a free trial download – visit [arcserve.com](http://arcserve.com).

## Try it now, visit [arcserve.com/software-trials](http://arcserve.com/software-trials)

Copyright © 2010 CA. All rights reserved. Linux is a registered trademark of Linus Torvalds in the United States, other countries, or both. Microsoft, Windows, SQL Server and SharePoint are trademarks of Microsoft Corporation in the United States, other countries, or both. UNIX is a registered trademark of The Open Group in the United States and other countries. All other trademarks, trade names, service marks and logos referenced herein belong to their respective companies. Nothing herein (i) affects the rights and/or obligations of CA or its licensees under any existing or future written license agreement or services agreement relating to any CA software product; or (ii) amends any product documentation or specifications for any CA software product. The development, release and timing of any features or functionality described herein remain at CA's sole discretion.



More than Backup